

# FM COUPLERS

## TYPES

3dBC2-C5K0

3dBC2-C10K

3dBC2-C30K

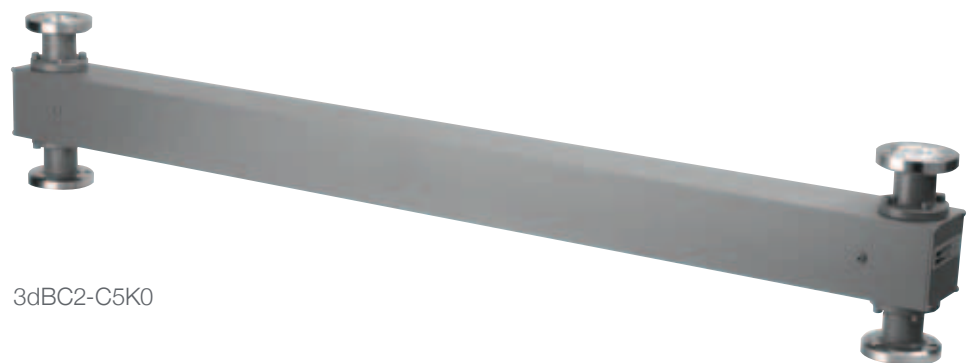
3dBC2-C60K

The 3 dB couplers can be used as power-splitters or as power combiners and their most common application is as components in the design of combiners.

They consist of two identical parallel transmission lines coupled over a length equal or approximately equal to  $l/4$  and mounted in a common exterior conductor.

The couplers are designed to achieve coupling differences in the operating frequency range at the output ports. The phase-shift between the two outputs is always  $90^\circ$  and is independent of frequency. The isolation between these two ports depends heavily on the VSWR of the port loads.

Couplers can be used for air-pressured systems on request.



3dBC2-C5K0

## TYPE DESCRIPTION

**xy-zppp**

x - type of coupler:  
**3dBC** - 3 dB coupler  
**6dBC** - 6 dB coupler  
**10dBC** - 10 dB coupler

y - frequency range:  
**2** - FM range (87,5 - 108 MHz)

z - type of transmission lines  
**C** - crossing  
**P** - parallel

ppp - output power:  
**5K0** - up to 5 kW  
**12K** - up to 12 kW  
**60K** - up to 60 kW

	3dBC2-C5K0	3dBC2-C12K	3dBC2-C30K	3dBC2-C60K
RF connector	4 x EIA 7/8" 3 x DIN 7/16 1 x EIA 7/8"	4 x EIA 1 5/8" 2 x EIA 7/8" 2 x EIA 1 5/8"	2 x EIA 1 5/8" 2 x EIA 3 1/8" 3 x EIA 1 5/8" 1 x EIA 3 1/8"	2 x EIA 3 1/8" 2 x EIA 4 1/2" 3 x EIA 3 1/8" 1 x EIA 4 1/2"
Output power (kW)	5	12	30	60
External dimensions h x d x w x (a) mm	52 x 148 x 830 x (782)	88 x 210 x 895 x (782)	154 x 302 x 900 x (782)	218 x 421 x 930 x (782)